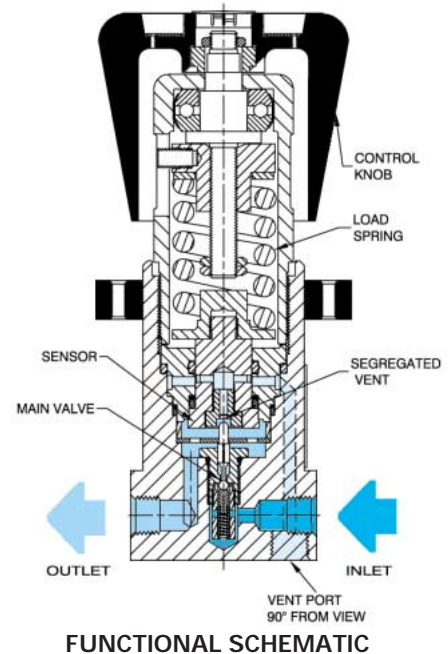


HYDRAULIC SERVICE

PRESSURE REDUCING REGULATOR

54-2000 SERIES



LOW FLOW • METAL SEATS • HIGH PRESSURE

The **54-2000 Series** is a rugged, high pressure, low flow pressure reducing regulator. It features metal-to-metal seats of hardened 17-4 stainless steel and Tungsten Carbide designed for hydraulic applications. Downstream fluid can be vented through a segregated vent system for easy pressure adjustments in either direction.

Seven standard pressure ranges provide for high sensitivity to the maximum outlet pressure ratings of 10,000 PSIG (690 bar). Special models available for inlet and outlet pressures of 15,000 and 20,000 PSIG (1034 and 1380 bar).

- Main valve capacity: $C_V = .06$
- Vent valve capacity: $C_V = .08$
- Segregated vent
- Metallic spring cap assembly
- Main valve cartridge
- Easily maintained
- Special models available for 15,000 and 20,000 PSIG (1034 and 1380 bar)
- Panel mounting standard (bracket included)
- Adapts to Tescom's air actuators Electropneumatic Controllers
- NACE compatibility available
- High impact handknob
- Cartridge style models available

TYPICAL APPLICATIONS

Blowout Prevention Systems
Choke Valve Control
Numerous Low Flow,
High Pressure Applications

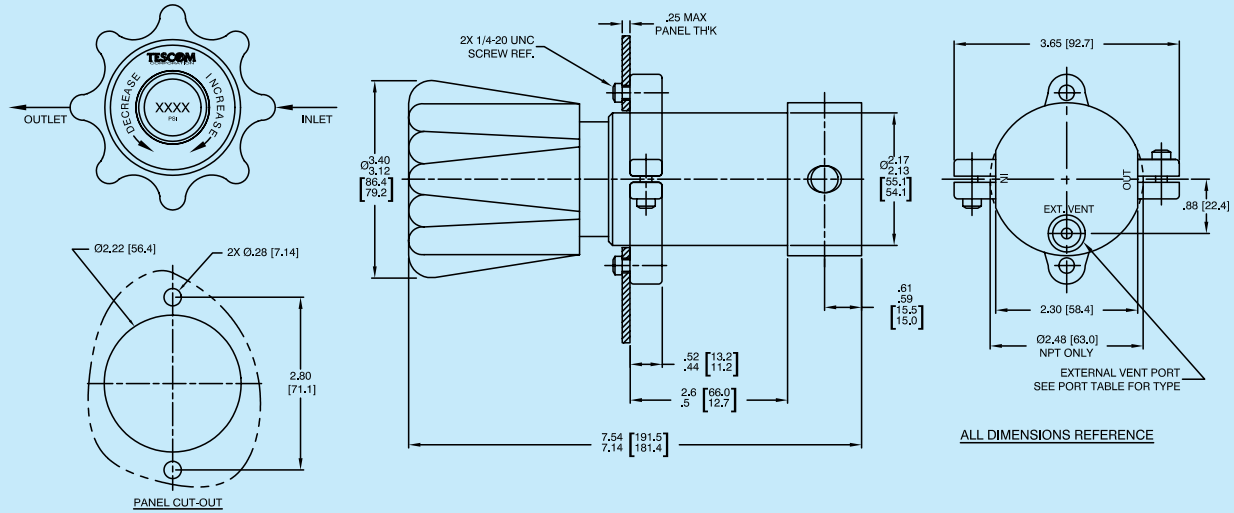
TESCOM
CORPORATION

INDUSTRIAL CONTROLS DIVISION
12616 Industrial Boulevard
Elk River, Minnesota 55330-2491
1-800-447-1250 (763) 241-3238
Fax: (763) 241-3224
e-mail: icd@tescom.com
www.tescom.com

Kel-F[®] is a registered trademark of 3M Co.
Viton-A[®], Vespel[®] and Teflon[®] are registered trademarks of DuPont.

INSTALLATION DIMENSIONS

METRIC EQUIVALENTS ARE IN BRACKETS



SPECIFICATIONS

FLUID MEDIA – All liquids compatible with the materials of construction. For other media, consult factory.

Maximum rated inlet pressure 10,000 PSIG (690 bar)**

Outlet pressure ranges* 5-500, 5-800, 10-1500, 15-2500
 25-4000, 50-6000 and 200-10,000 PSIG
 (.3-35, .3-55, .7-105, 1-175, 1.7-280, 3.5-415 and 14-690 bar)

Design proof pressure 150% maximum rated pressure

Design burst pressure 400% maximum rated pressure

Materials in contact with media:

- Body 303 or 316 Stainless steel
- Main valve poppet Tungsten Carbide
- Seats and vent poppet 17-4 SST
- Back-up rings Teflon®
- O-rings See Ordering Table
- Trim 300 Series Stainless and 17-4 SST

Flow capacity Main valve: $C_v = .06$ / Vent Valve: $C_v = .08$

Ambient operating & fluid media temperature (Buna-N) -65°F to +200°F
 (-55°C to +93°C)

Leakage (max) 2 drops/minute @ 150 S.U.S. @ 2500 PSIG (175 bar)

Weight 5.25 lbs. (2.37 kg)

Ports See Ordering Information

Maximum operating torque 50 in.-lb. (5.7 Nm)

* Regulators vent to zero PSIG (zero bar) in all pressure ranges.

ORDERING INFORMATION

EXAMPLE: 5 4 - 2 0 2 4 D 2 4

BASIC SERIES	INLET & OUTLET PORT SIZE
	4 - 1/4"
BODY & BONNET MATERIAL	6 - 3/8"
2 - 303 Stainless Steel	8 - 1/2" (NPT only)
6 - 316 Stainless Steel	
OUTLET PRESSURE RANGE	INLET & OUTLET PORT TYPE
1 - 200-10,000 PSIG (14-690 bar)	1 - SAE (1/4" only) SAE
2 - 50-6000 PSIG (3.5-414 bar)	2 - NPT NPT
3 - 25-4000 PSIG (1.7-276 bar)	3 - MS33649 (1/4" only) MS33649
4 - 15-2500 PSIG (1.0-172 bar)	4 - AMINCO NPT
5 - 10-1500 PSIG (.7-103 bar)	6 - Slimline NPT
6 - 5-800 PSIG (.35-55 bar)	
7 - 5-500 PSIG (.35-35 bar)	
	VENT PORT (1/4")
	1 - SAE (1/4" only) SAE
	2 - NPT NPT
	3 - MS33649 (1/4" only) MS33649
	4 - AMINCO NPT
	6 - Slimline NPT
*SEALING MATERIAL (O-RING)	
Dynamic	Static
A - Teflon® Viton®	D - Buna-N Buna-N
D - Buna-N Buna-N	5+ 5+
T - Viton-A® Viton-A®	Z - EPDM EPDM
Z - EPDM EPDM	

STANDARD MODIFICATIONS:

** 15,000 PSIG inlet and outlet capability mod-011

** 20,000 PSIG inlet and outlet capability mod-103 (hydraulic service only)

For H₂S compatibility per NACE spec MR-0-75 (rev. 1982)..... mod-002

For gaseous service mod-021

54-2000 SERIES

ACCESSORIES (optional at extra cost)

Standard Model No.	Standard Repair Kits	Soft Good Kits
54-20X1*XX	P/N 389-2542-*	P/N 389-2541-*
54-20X2*XX, 54-20X3*XX	P/N 389-2503-*	P/N 389-2419-*
54-20X4*XX	P/N 389-2504-*	P/N 389-2420-*
54-20X5*XX, 54-20X6*XX & 54-20X7*XX	P/N 389-2505-*	P/N 389-2421-*

* To complete the part number, select a letter code from the Ordering Information table under Sealing Material.

FLOW CHART (Metric units are in parentheses)

